

2 Phase hybride stappenmotor / 2 Phase hybride steppermotor

Moteur hybride pas à pas 2 phases / 2 Phase hybride Schrittmotor

Size 42 Series

Versie	: 1.0
Step Angle	: 1.8 Degree
Positional Accuracy	: 5%
Number of phases	: 2
Temperature rise	: 80 degree max.
Dielectric strength	: 500 Vdc
Insulation resistance	: 100 Mohm (500 Vdc)
Insulation class	: B
Radial play	: 0.025 mm (450 g load)

Type	Koppel	I	R	V	Inductie	As	Gewicht	Lengte
	Nm	Amp	Ohm	Volt	mH	mm	Kg	mm
42SM146-065-8W-SB18-20	20	3.25	1.6	5.2	15	18	8.5	146

Koppel = houdkoppel bij volle stroom door alle spoelen.

Stroom = stroom per spoel (bij parallel schakelen is deze 2 x de waarde).

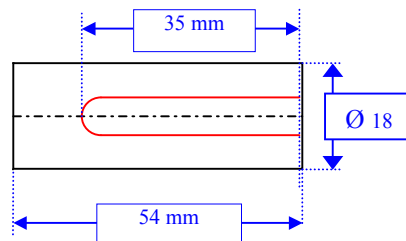
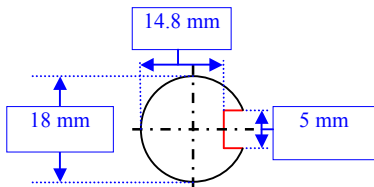
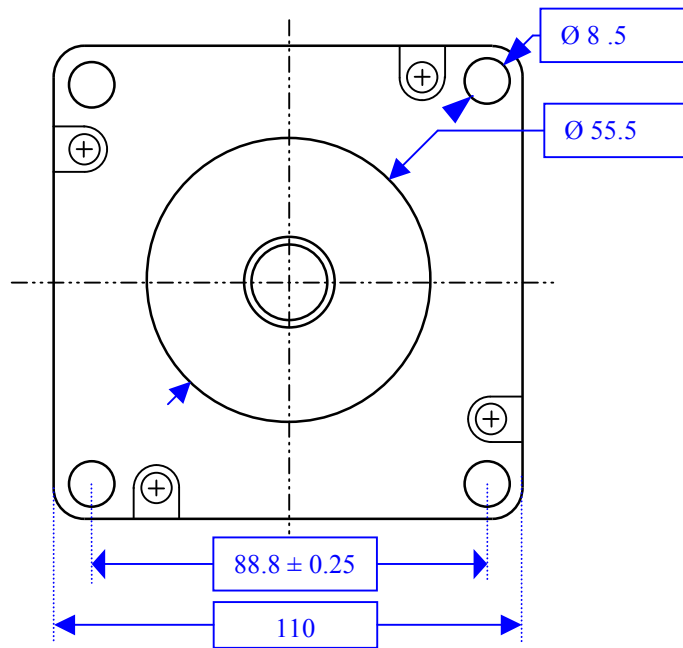
Spanning = spanning per spoel (bij serie schakelen is deze 2 x de waarde).

Weerstand = weerstand per spoel (bij serie schakelen is deze 2 x de waarde).

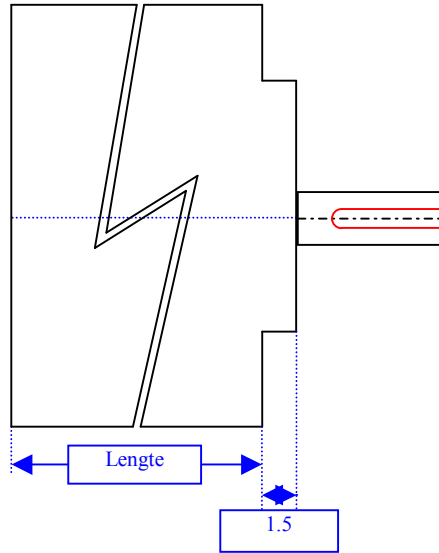
Zelfinductie = zelfinductie per spoel (bij serieschakelen is deze 4 x de waarde).

N (Nm)	= Koppel	= Torque	= Haltemoment
A (Ampere)	= Stroom / spoel	= Current / coil	= Strom / spule
Ohm (Ohm)	= Weerstand / spoel	= Resistance / coil	= wiederstand / spule
V (Volt)	= Spanning / spoel	= Voltage / coil	= spannung / spule
MH (mH)	= Zelfinductie / spoel	= Selfinduction / coil	= Selfinduction / spule
Gcm2 (Gcm2)	= Rotor inertia	= Rotor inertia	= Rotor inertia
Kg (Kg)	= Gewicht van motor	= Weight of stepper motor	= Motorgewicht
Mm (mm)	= Lengte van motor	= Length of stepper motor	= Motor länge
			= couple
			= le courant / bobine
			= resistance / bobine
			= tension / bobine
			= l'inductance / bobine
			= le inertia de rotor
			= le poids de moteur
			= la longueur de moteur

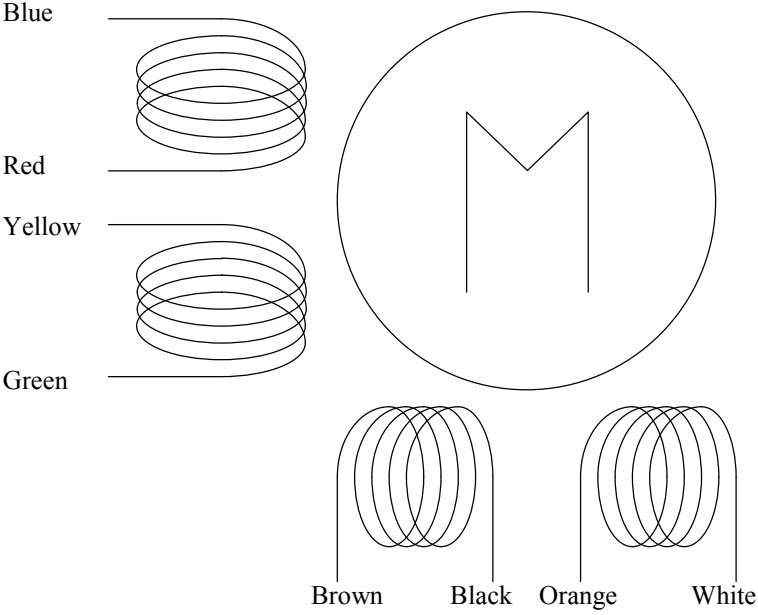
Nema 42 Size steppermotor



Single shaft (SB x) type steppermotor



Draden / wires / leitungen / fils



Blue	= Blauw	= Blue	= Blau	= Bleu
Red	= Rood	= Red	= Rot	= Rouge
Yellow	= Geel	= Yellow	= Gelb	= Jaune
Green	= Groen	= Green	= Grün	= Vert
Brown	= Bruin	= Brown	= Braun	= Brun
Black	= Zwart	= Black	= Zwart	= Noir
Orange	= Oranje	= Orange	= Orange	= Orange
White	= Wit	= White	= Weiss	= Blanc

Aansluitingen / Wiring / anslusse / les raccordements

Bipolair Parallel :	Motor	Driver
	Blue + Yellow →	A+
	Red + Green →	A-
	Brown + Orange →	B+
	Black + White →	B-
Maximum torque	= maximum torque	
Maximum current	= 2 * Current / coil	
Self induction	= Induction / coil	

Bipolair Serieel :	Motor	Driver
	Blue →	A+
	Red + Yellow →	A-
	Green →	A-
	Braun →	B+
	Black + Orange →	B+
	White →	B-
Maximum torque	= maximum torque	
Maximum current	= Current / coil	
Self induction	= 4 * Induction / coil	

Unipolair :	Motor	Driver
	Blue →	A+
	Red + Yellow →	+ V
	Green →	A-
	Brown →	B+
	Black + Orange →	+V
	White →	B-
Maximum torque	= maximum torque / 1.4	
Maximum current	= 1.4 * Current / coil	
Self induction	= Induction / coil	